

TELESCOPING SUPERFLEX™ POLES

These fiberglass flagpoles sway in the breeze producing a dramatic, attention-getting display. Available in both 15' and 21' exposed height sizes and comes complete with 21" PVC ground sleeve and easy-to-follow instructions. The 15' pole is adjustable from 6' to 15' while the 21' pole is adjustable from 8' to 21'. When used in combination with our NeverFurl flag unfurlers on page 130, the visual effect is amazing. The number of flags recommended to be flown the 15' pole are: (1) 3' x 5' or (1) 4' x 6' or (2) 2' x 3'. The number of flags recommended to be flown on the 21' pole are: up to (2) 3' x 5' or up to (3) 2' x 3' or (1) 4' x 6' and (1) 3' x 5'.



Vinyl tipped to prevent damage to flag.

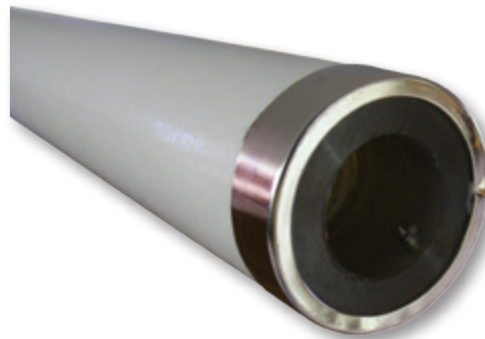


OPEN



CLOSED

Positive lock screw joints.



Re-enforced bottom for extra durability.



The perfect pole for Feather Flags.

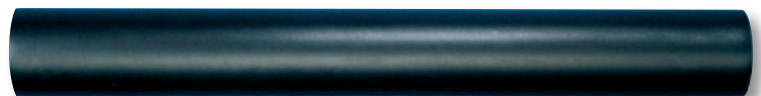
COMPLETE SETS w/GROUND SLEEVE

Pricing does not include any flags or flag unfurlers

ITEM #	HEIGHT	COLOR	BUTT DIA.	TOP DIA.	1-5	6-11	12+	LBS.
323442	15'	WHITE	1-1/4"	3/4"	\$78.00	\$74.00	\$67.00	5.2
323443	21'	WHITE	1-1/4"	3/4"	84.00	81.00	71.00	7.0
324172	15'	BLACK	1-1/4"	3/4"	78.00	74.00	67.00	5.2
324173	21'	BLACK	1-1/4"	3/4"	84.00	81.00	71.00	7.0

REPLACEMENT GROUND SLEEVES

ITEM #	LENGTH	PRICE	LBS.
324187	21"	\$6.70	.30



See pages 100 - 101 for Feather Flags

