

FRANKLIN SERIES

The Franklin series comes complete with 1-1/2" diameter clear anodized aluminum pole, 3" gold anodized aluminum ball ornament, cast aluminum single-sheave stationary truck, 50' of 1/4" solid braided polypropylene halyard, (2) nylon flag snaps per halyard, 9" cast aluminum cleat(s) with mounting screws and cast or fabricated aluminum mounting bracket(s). Mounting hardware not included.

OUTRIGGER SETS

With Bracket

MODEL	ITEM #	LEN.	1-2	3-6	7+	LBS.
EOA6	323403	6'	\$310	\$300	\$280	14
EOA9	323404	9'	360	350	320	17
EOA10	323405	10'	370	360	350	18



OUTRIGGER BRACKET

Displays Pole at 30° Angle

Mounting Hardware Not Included

MODEL	ITEM #	1-2	3-6	7+	LBS.
EOA	323422	\$113	\$111	\$109	3.4



SINGLE CORNER SETS

With Bracket

MODEL	ITEM #	LEN.	1-2	3-6	7+	LBS.
SC6	323406	6'	\$390	\$370	\$350	16
SC9	323407	9'	440	420	410	19
SC10	323408	10'	460	440	430	20



SINGLE CORNER BRACKET

Displays Pole at 45° Angle

Mounting Hardware Not Included

MODEL	ITEM #	1-2	3-6	7+	LBS.
SC	323423	\$198	\$192	\$181	5.2



DOUBLE CORNER SETS

With Bracket

MODEL	ITEM #	LEN.	1-2	3-6	7+	LBS.
DC6	323409	6'	\$430	\$410	\$400	26
DC9	323410	9'	470	450	440	31
DC10	323411	10'	480	460	450	33

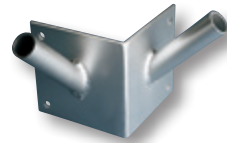


DOUBLE CORNER BRACKET

Displays Pole at 45° Angle

Mounting Hardware Not Included

MODEL	ITEM #	1-2	3-6	7+	LBS.
DC	323424	\$221	\$213	\$204	5.8



TRIPLE CORNER SETS

With Bracket

MODEL	ITEM #	LEN.	1-2	3-6	7+	LBS.
TC6	323412	6'	\$460	\$440	\$430	32
TC9	323413	9'	500	470	460	39
TC10	323414	10'	510	480	470	42



TRIPLE CORNER BRACKET

Displays Pole at 45° Angle

Mounting Hardware Not Included

MODEL	ITEM #	1-2	3-6	7+	LBS.
TC	323425	\$246	\$238	\$225	6.3



VERTICAL WALL SETS

With Brackets

MODEL	ITEM #	LEN.	1-2	3-6	7+	LBS.
EVWA6	323415	6'	\$290	\$280	\$260	13
EVWA9	323416	9'	330	320	310	16
EVWA10	323417	10'	360	350	320	17
EVWA12	323418	12'	370	350	330	19



VERTICAL WALL BRACKETS

Mounting Hardware Not Included

Priced Per Set of Top & Bottom Bracket

MODEL	ITEM #	1-2	3-6	7+	LBS.
EVWA	323426	\$107	\$102	\$95	2.2



ROOF MOUNT SET

With Bracket

MODEL	ITEM #	LEN.	1-2	3-6	7+	LBS.
RM6	323419	6'	\$390	\$360	\$350	15
RM9	323420	9'	430	410	400	18
RM10	323421	10'	460	450	430	19



ROOF MOUNT BRACKET

Mounting Hardware Not Included

See "Vertical Holders" Pricing on Page 127



**CLEAR
ANODIZED
POLES
ONLY**

ITEM #	DIAMETER	LENGTH	WALL	PRICE	LBS.
310039	1-1/2"	72"	.125	\$50	3.7
323739	1-1/2"	96"	.125	70	4.6
323427	1-1/2"	108"	.125	75	5.6
323428	1-1/2"	120"	.125	85	6.2
323429	1-1/2"	144"	.125	102	7.4