



RTC-2 SERIES

Same description as our RTC-1 Series above, except:

- **Pulleys:** 1-15/16" outside diameter cast nylon on 1/4" stainless steel axles

For External Halyard Poles • Cap Style • Revolving • Double Pulley

MODEL	FITS POLE DIAMETER	LBS.	SILVER			BRONZE #313			WHITE			BLACK		
			ITEM #	1-5	6+	ITEM #	1-5	6+	ITEM #	1-5	6+	ITEM #	1-5	6+
RTC-2-138	1-3/8"	2.5	340353	\$87	\$76	340310	\$96	\$86	340311	\$96	\$86	340354	\$96	\$86
RTC-2-2	2"	2.3	340120	87	76	340122	96	86	340124	96	86	340126	96	86
RTC-2-238	2-3/8"	2.6	340121	87	76	340123	96	86	340125	96	86	340127	96	86



RTS-1 SERIES

- **Construction:** cast aluminum

- **Pulley:** 1-1/2" outside diameter cast nylon on 1/4" stainless steel axle

- **Max halyard diameter:** 5/16"

- **Truck Spindle:** 1-1/4" NPT threading

- **Flagpole:** For up to 3-1/2" outside top diameter pole w/ female fitting installed

- **Ornaments:** accepts spindle threading of 1/2"-13NC*. Secured by 1 stainless steel set screw (1/4"-20NC)

- **Movement:** utilizes self-lubricating ball bearing assemblies for ease of rotation, product life and strength

* Can be supplied with other threading sizes if desired

For External Halyard Poles • Threaded • Revolving • Single Pulley

MODEL	FITS POLE DIAMETER	LBS.	SILVER			BRONZE #313			WHITE			BLACK		
			ITEM #	1-5	6+	ITEM #	1-5	6+	ITEM #	1-5	6+	ITEM #	1-5	6+
RTS-1-125	3-1/2"	1.9	340136	\$70	\$63	340137	\$76	\$70	340138	\$76	\$70	340139	\$76	\$70



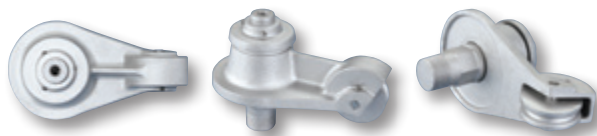
RTS-2 SERIES

Same description as our RTS-1 Series above, except:

- **Pulleys:** 1-15/16" outside diameter cast nylon on 1/4" stainless steel axles

For External Halyard Poles • Threaded • Revolving • Double Pulley

MODEL	FITS POLE DIAMETER	LBS.	SILVER			BRONZE #313			WHITE			BLACK		
			ITEM #	1-5	6+	ITEM #	1-5	6+	ITEM #	1-5	6+	ITEM #	1-5	6+
RTS-2-125	3-1/2"	2.6	340144	\$76	\$70	340145	\$81	\$73	340146	\$81	\$73	340147	\$81	\$73



HDT-1 SERIES

- **Construction:** cast aluminum

- **Pulley:** 2-1/2" outside diameter cast aluminum on 1/2" stainless steel axle

- **Max halyard diameter:** 3/8"

- **Truck Spindle:** 1-1/4" NPT threading

- **Flagpole:** up to 5-1/2" outside top diameter pole w/ female fitting installed †

- **Ornaments:** accepts spindle threading of 1/2"-13NC*. Secured by 1 stainless steel set screw (1/4"-20NC)

- **Movement:** utilizes enclosed stainless steel bearings and raceway

* Can be supplied with other threading sizes if desired

† The revolving arm can be modified for larger pole top diameters; contact us for a prompt quotation.

For External Halyard Poles • Threaded • Revolving • Single Pulley

MODEL	FITS POLE DIAMETER	LBS.	SILVER			BRONZE #313			WHITE			BLACK		
			ITEM #	1-5	6+	ITEM #	1-5	6+	ITEM #	1-5	6+	ITEM #	1-5	6+
HDT-1	5-1/2"	8.5	340335	\$156	\$141	340336	\$169	\$152	340337	\$169	\$152	340338	\$169	\$152



HDT-2 SERIES

Same description as our HDT-1 Series above, except:

- **Pulleys:** 3-3/4" outside diameter cast aluminum on 1/2" stainless steel axles

For External Halyard Poles • Threaded • Revolving • Double Pulley

MODEL	FITS POLE DIAMETER	LBS.	SILVER			BRONZE #313			WHITE			BLACK		
			ITEM #	1-5	6+	ITEM #	1-5	6+	ITEM #	1-5	6+	ITEM #	1-5	6+
HDT-2	5-1/2"	8.5	340152	\$173	\$156	340153	\$187	\$168	340154	\$187	\$168	340155	\$187	\$168