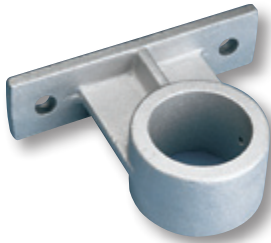


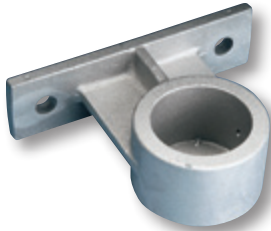
VERTICAL WALL MOUNT SERIES

External Halyard Cone Tapered Aluminum Flagpoles

BRACKETS FOR 2-3/8" THROUGH 5" POLES



TOP VIEW



BOTTOM VIEW

BRACKETS FOR 6" AND 6-1/2" POLES



TOP VIEW



BOTTOM VIEW

STANDARD ACCESSORIES

- Gold anodized aluminum ball ornament
- Cast aluminum revolving truck on 5" & 6" diameter poles; all others have a stationary truck as standard
- Solid braided polypropylene halyard
- Cast aluminum cleat with mounting screws
- 4", 5" & 6" diameter poles have swivel flag snaps with vinyl covers; all others have nylon flag snaps
- Cast aluminum mounting brackets; NOTE: Specify expansion shields or thru wall bolts; if not specified expansion shields will be provided

MODEL	OVERALL LENGTH	# OF SECTIONS	BUTT DIA.	TOP DIA.	WALL	REC. FLAG SIZE	SHIPPING WEIGHT
EVWM8	8'	1	2-3/8"	1-7/8"	.140	3' x 5'	31 lbs.
EVWM10	10'	1	2-3/8"	1-7/8"	.140	3' x 5'	35 lbs.
EVWM12	12'	1	2-3/8"	1-7/8"	.140	3' x 5'	38 lbs.
EVWM14	14'	1	2-3/8"	1-7/8"	.140	3' x 5'	42 lbs.
EVWM17	17'	1	2-3/8"	1-7/8"	.140	3' x 5'	47 lbs.
EVWM20	20'	1	2-3/8"	1-7/8"	.140	3' x 5'	52 lbs.
EVWM22	22'	1	2-3/8"	1-7/8"	.140	3' x 5'	56 lbs.

EVWS8	8'	1	3"	1-7/8"	.125	3' x 5'	31 lbs.
EVWS10	10'	1	3"	1-7/8"	.125	3' x 5'	34 lbs.
EVWS12	12'	1	3"	1-7/8"	.125	3' x 5'	38 lbs.
EVWS14	14'	1	3"	1-7/8"	.125	3' x 5'	42 lbs.
EVWS17	17'	1	3"	1-7/8"	.125	3' x 5'	48 lbs.
EVWS20	20'	1	3"	1-7/8"	.125	3' x 5'	53 lbs.
EVWS22	22'	1	3"	1-7/8"	.125	3' x 5'	57 lbs.
EVWS25	25'	1	3"	1-7/8"	.125	3' x 5'	63 lbs.
EVWS27	27'	1	3"	1-7/8"	.125	3' x 5'	67 lbs.

EVW12	12'	1	3-1/2"	2-3/8"	.125	3' x 5'	44 lbs.
EVW16	16'	1	3-1/2"	2-3/8"	.125	3' x 5'	52 lbs.
EVW20	20'	1	3-1/2"	2-3/8"	.125	3' x 5'	59 lbs.
EVW22	22'	1	3-1/2"	2-3/8"	.125	3' x 5'	66 lbs.
EVW25	25'	1	3-1/2"	2-3/8"	.125	4' x 6'	75 lbs.
EVW27	27'	1	3-1/2"	2-3/8"	.125	4' x 6'	77 lbs.

EVWAF16	16'	1	4"	2-3/8"	.125	3' x 5'	81 lbs.
EVWAF20	20'	1	4"	2-3/8"	.125	3' x 5'	94 lbs.
EVWAF22	22'	1	4"	2-3/8"	.125	3' x 5'	101 lbs.
EVWAF25	25'	1	4"	2-3/8"	.125	4' x 6'	110 lbs.
EVWAF27	27'	1	4"	2-3/8"	.125	4' x 6'	117 lbs.
EVWAF30*	30'	1 or 2	4"	2-3/8"	.125	5' x 8'	178 lbs.

LVW20	20'	1	5"	3"	.125	4' x 6'	97 lbs.
LVWC20	20'	1	5"	3"	.188	4' x 6'	99 lbs.
LVW23	23'	1	5"	3"	.125	4' x 6'	108 lbs.
LVWC23	23'	1	5"	3"	.188	4' x 6'	111 lbs.
LVW25	25'	1	5"	3"	.125	4' x 6'	115 lbs.
LVWA25	25'	1	5"	3"	.156	4' x 6'	131 lbs.
LVW27	27'	1	5"	3"	.125	4' x 6'	123 lbs.
LVWA27	27'	1	5"	3"	.156	4' x 6'	139 lbs.

LVW30*	30'	1 or 2	6"	3-1/2"	.156	5' x 8'	178 lbs.
LVWC30*	30'	1 or 2	6"	3-1/2"	.188	5' x 8'	230 lbs.
LVW33*	33'	1 or 2	6"	3-1/2"	.156	5' x 8'	192 lbs.
LVWC33*	33'	1 or 2	6"	3-1/2"	.188	5' x 8'	250 lbs.
LVW35*	35'	1 or 2	6"	3-1/2"	.156	6' x 10'	201 lbs.

* Flagpole models available in both one and two section styles; please specify when placing your order. Single section pole(s) will be shipped if not specified. Add 10% to the pricing for two section style flagpoles.