

FLAGPOLE TRUCKS & ACCESSORIES



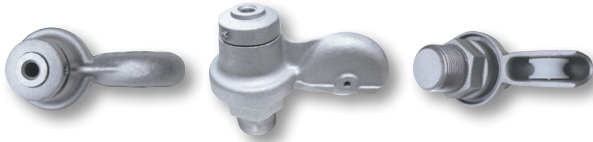
RTC-2 SERIES

Same description as our RTC-1 Series on page 164, except:

- **Pulleys:** 1-15/16" outside diameter cast nylon on 1/4" stainless steel axles

For External Halyard Poles • Cap Style • Revolving • Double Pulley

MODEL	FITS POLE DIAMETER	LBS.	SILVER			BRONZE #313			WHITE			BLACK		
			ITEM #	1-5	6+	ITEM #	1-5	6+	ITEM #	1-5	6+	ITEM #	1-5	6+
RTC-2-138	1-3/8"	2.5	340353	\$96	\$85	340310	\$106	\$95	340311	\$106	\$95	340354	\$106	\$95
RTC-2-2	2"	2.3	340120	96	85	340122	106	95	340124	106	95	340126	106	95
RTC-2-238	2-3/8"	2.6	340121	96	85	340123	106	95	340125	106	95	340127	106	95



RTS-1 SERIES

- **Construction:** cast aluminum

- **Pulley:** 1-1/2" outside diameter cast nylon on 1/4" stainless steel axle

- **Max halyard diameter:** 5/16"

- **Truck Spindle:** 1-1/4" NPT threading

- **Flagpole:** For up to 3-1/2" outside top diameter pole w/ female fitting installed

- **Ornaments*:** accepts spindle threading of 1/2"-13NC. Secured by 1 stainless steel set screw (1/4"-20NC)

- **Movement:** utilizes self-lubricating ball bearing assemblies for ease of rotation, product life and strength

For External Halyard Poles • Threaded • Revolving • Single Pulley

MODEL	FITS POLE DIAMETER	LBS.	SILVER			BRONZE #313			WHITE			BLACK		
			ITEM #	1-5	6+	ITEM #	1-5	6+	ITEM #	1-5	6+	ITEM #	1-5	6+
RTS-1-125	3-1/2"	1.9	340136	\$78	\$71	340137	\$85	\$78	340138	\$85	\$78	340139	\$85	\$78



RTA-1 SERIES

- **Construction:** cast aluminum

- **Pulley:** 1-1/2" outside diameter machined aluminum on 1/4" stainless steel axle

- **Max halyard diameter:** 5/16"

- **Truck Spindle:** 1-1/4" NPT threading

- **Flagpole:** For up to 3-1/2" outside top diameter pole w/ female fitting installed

- **Ornaments*:** accepts spindle threading of 1/2"-13NC. Secured by 1 stainless steel set screw (1/4"-20NC)

- **Movement:** utilizes self-lubricating ball bearing assemblies for ease of rotation, product life and strength

For External Halyard Poles • Threaded • Revolving • Single Pulley

MODEL	FITS POLE DIAMETER	LBS.	SILVER			BRONZE #313			WHITE			BLACK		
			ITEM #	1-5	6+	ITEM #	1-5	6+	ITEM #	1-5	6+	ITEM #	1-5	6+
RTA-1-125	3-1/2"	2.0	340360	\$88	\$81	340361	\$94	\$88	340362	\$94	\$88	340363	\$94	\$88



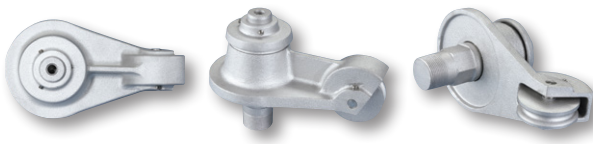
RTS-2 SERIES

Same description as our RTS-1 Series above, except:

- **Pulleys:** 1-15/16" outside diameter cast nylon on 1/4" stainless steel axles

For External Halyard Poles • Threaded • Revolving • Double Pulley

MODEL	FITS POLE DIAMETER	LBS.	SILVER			BRONZE #313			WHITE			BLACK		
			ITEM #	1-5	6+	ITEM #	1-5	6+	ITEM #	1-5	6+	ITEM #	1-5	6+
RTS-2-125	3-1/2"	2.6	340144	\$85	\$78	340145	\$90	\$82	340146	\$90	\$82	340147	\$90	\$82



HDT-1 SERIES

- **Construction:** cast aluminum

- **Pulley:** 2-1/2" outside diameter cast aluminum on 1/2" stainless steel axle

- **Max halyard diameter:** 3/8"

- **Truck Spindle:** 1-1/4" NPT threading

- **Flagpole:** up to 5-1/2" outside top diameter pole w/ female fitting installed †

- **Ornaments*:** accepts spindle threading of 1/2"-13NC. Secured by 1 stainless steel set screw (1/4"-20NC)

- **Movement:** utilizes enclosed stainless steel bearings and raceway

† The revolving arm can be modified for larger pole top diameters; contact us for a prompt quotation.

For External Halyard Poles • Threaded • Revolving • Single Pulley

MODEL	FITS POLE DIAMETER	LBS.	SILVER			BRONZE #313			WHITE			BLACK		
			ITEM #	1-5	6+	ITEM #	1-5	6+	ITEM #	1-5	6+	ITEM #	1-5	6+
HDT-1	5-1/2"	4.8	340335	\$181	\$164	340336	\$197	\$177	340337	\$197	\$177	340338	\$197	\$177

* Truck Ornament Spindle can be supplied with other threading sizes if desired

All trucks on pages 162 thru 165 except the fiberglass trucks can be mixed to achieve the higher quantity pricing.

If medium bronze #312, light bronze #311 or a custom color is desired please specify when ordering.