

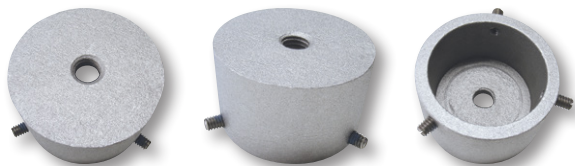
FLAGPOLE TRUCKS & ACCESSORIES



POLE TOP ADAPTERS

These adapters are used when mounting a truck that has a spindle threading of 1-1/4" NPT and the pole does not have a threaded top plug installed. The adapter is tapped 1-1/4" NPT and is designed to slip over the top of the pole and is secured by three 1/4"-20NC stainless steel set screws. Please specify color when ordering. If not specified, silver will be supplied. Pole Top Adapters can be mixed to achieve the higher quantity pricing.

MODEL	FITS POLE DIAMETER	LBS.	SILVER			BRONZE #313			WHITE			BLACK		
			ITEM #	1-5	6+	ITEM #	1-5	6+	ITEM #	1-5	6+	ITEM #	1-5	6+
PTA-238	2-3/8"	.65	340238	\$57	\$52	340247	\$63	\$57	340256	\$63	\$57	340265	\$63	\$57
PTA-212	2-1/2"	.68	340239	57	52	340248	63	57	340257	63	57	340266	63	57
PTA-3	3"	1.0	340240	78	73	340249	85	78	340258	85	78	340267	85	78
PTA-312	3-1/2"	1.3	340241	78	73	340250	85	78	340259	85	78	340268	85	78
PTA-4	4"	1.6	340242	94	83	340251	103	92	340260	103	92	340269	103	92
PTA-412	4-1/2"	2.0	340243	94	83	340252	103	92	340261	103	92	340270	103	92
PTA-5	5"	2.4	340244	94	83	340253	103	92	340262	103	92	340271	103	92
PTA-512	5-1/2"	2.9	340245	123	110	340254	133	120	340263	133	120	340272	133	120
PTA-6	6"	3.8	340246	123	110	340255	133	120	340264	133	120	340273	133	120



FLAGPOLE CAPS

Cast aluminum construction designed to slip over the top of the flagpole and be secured with three 1/4"-20NC stainless steel set screws. The top of the cap is designed to accept an ornament with a spindle threading of 1/2"-13NC as standard but can be supplied with other sizes of threading or no threading. Please specify color when ordering. If not specified, silver will be supplied.

MODEL	FITS POLE DIAMETER	LBS.	SILVER			BRONZE #313			WHITE			BLACK		
			ITEM #	1-5	6+	ITEM #	1-5	6+	ITEM #	1-5	6+	ITEM #	1-5	6+
FC-20	2"	.60	340274	\$22.50	\$20.00	340276	\$25.50	\$23.50	340278	\$25.50	\$23.50	340280	\$25.50	\$23.50
FC-212	2-1/2"	.60	340275	25.50	23.50	340277	27.50	25.50	340279	27.50	25.50	340281	27.50	25.50



PULLEY & EYEBOLT ASSEMBLIES

Includes Hex Nut, Washer & Lock Washer

MODEL	ITEM #	OVERALL LENGTH	THREAD LENGTH	BOLT THREADING	BOLT MATERIAL	PULLEY HOUSING MATERIAL	PULLEY MATERIAL	MAX. ROPE DIAMETER	1-5	6+	LBS.
DELUXE	340236	4-1/8"	2-3/8"	5/16"-18NC	STAINLESS STEEL	STAINLESS STEEL	NYLON	5/16"	\$20.50	\$19.50	.02
STANDARD	340237	3-1/8"	1"	#8-32NC	ZINC PLATED STEEL	ZINC	ZINC	3/16"	6.10	5.60	.07



ROPE PULLEYS

ITEM #	DIA.	WIDTH	MATERIAL	MAXIMUM AXLE DIA.	MAXIMUM ROPE DIA.	USED WITH OUR TRUCK MODEL NUMBER...	1-5	6+	LBS.
340302	1"	3/8"	NYLON	3/16"	1/4"	ST-1-38, ST-1-12, ST-1-16, ST-1-20	\$3.50	\$3.20	.01
340356*	1-1/2"	1/2"	NYLON	1/4"	1/4"	OTH, IH-1-35, OT35	4.90	4.30	.03
340355	1-1/2"	9/16"	NYLON	1/4"	1/4"	ST2, ST3, OT1, OT25, IH-1 INNER PULLEY INSERT	4.90	4.30	.03
340358	1-1/2"	3/4"	NYLON	1/4"	5/16"	RTS-1-125, RTC-1-138, RTC-1-2, RTC-1-238	5.20	4.90	.04
340357	1-15/16"	9/16"	NYLON	1/4"	5/16"	RTS-2-125, RTC-2-138, RTC-2-2, RTC-2-238, RTSB	5.20	4.90	.04
340320	2"	1/2"	NYLON	1/4"	5/16"	OT2, OT3, OT325, IH-1-3, IHT-VS	4.30	3.90	.04
340359	2-1/2"	7/8"	ALUMINUM	1/2"	3/8"	HDT-1	24.50	22.50	.40
340305	3-3/4"	3/4"	ALUMINUM	1/2"	3/8"	HDT-2	25.00	23.00	.45

*340356 is also used with our Vertical Mount Pulley Assemblies. Please note that the diameter of all of our nylon pulleys can vary plus or minus 1/16".

VERTICAL MOUNT PULLEY ASSEMBLIES

Cast aluminum construction. 1-1/2" outside diameter cast nylon pulley on a 1/4" stainless steel axle. Attaches with two 1/4"-20NC stainless steel flat head screws or two stainless steel straps (not included). Maximum halyard diameter is 5/16". Not supplied as standard with holes drilled for mounting. Add \$2.00 for drilling.

ITEM #	COLOR	1-5	6+	LBS.
340298	SILVER	\$25.50	\$23.50	.60
340299	BRONZE #313	29.00	26.50	.60
340300	BLACK	29.00	26.50	.60
340301	WHITE	29.00	26.50	.60



THREADED TOP PLUGS

Screws into top of pole with 1-1/4" NPT threading and allows for insertion of ornament with either a 1/2"-13NC or 5/8"-11NC spindle threading.

ITEM #	FOR ORNAMENT SPINDLE SIZE	1-5	6+	LBS.
340306	1/2"-13NC	\$30.50	\$28.00	.25
340307	5/8"-11NC	33.50	29.50	.25

If medium bronze #312, light bronze #311 or a custom color is desired please specify when ordering.