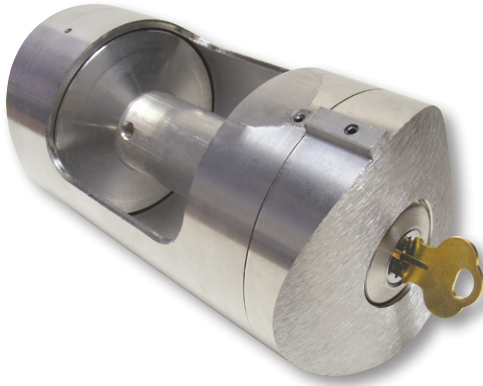


INTERNAL HALYARD PARTS & ACCESSORIES

M-WINCHES

Standard finishes available: Satin, Clear, Bronze #313, White, Black



The maintenance-free M-Winch is gearless and self-locking at any point, eliminating the need for a separate brake. This direct drive winch provides rapid raising and lowering of the flag with little effort. The design does not require any welding, thus avoiding discoloration when an anodized finish is desired. No monthly lubrication is needed. This winch system can be easily adapted to existing on-site flagpoles. The winch is inserted into the pole and secured with a stainless steel bolt on the back side of the pole. Other sizes available upon request.

Normal appearance of M-Winch while flag is flying or there is no flag being flown.



To remove lock, insert key, turn counter-clockwise and remove the lock exposing the winch insertion slot.



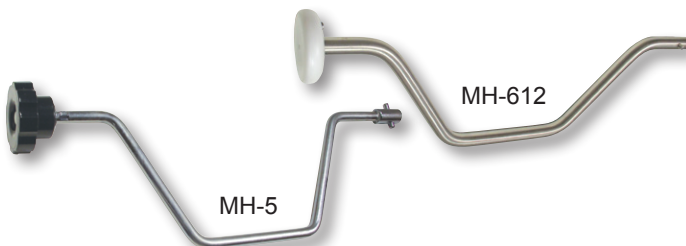
Insert handle into the winch insertion slot, apply inward pressure to locking mechanism and raise or lower the flag to desired position.



MODEL	FITS POLE DIA.	LBS.	SATIN			CLEAR			BRONZE #313			WHITE			BLACK		
			ITEM #	1-5	6+	ITEM #	1-5	6+	ITEM #	1-5	6+	ITEM #	1-5	6+	ITEM #	1-5	6+
M-5	5" w/.125 WALL	1.3	360000	\$490	\$470	360009	\$520	\$490	360018	\$520	\$490	360027	\$520	\$490	360036	\$520	\$490
M-5	5" w/.156 WALL	1.3	360344	490	470	360345	520	490	360346	520	490	360347	520	490	360348	520	490
M-6	6"	2.1	360001	780	720	360010	810	760	360019	810	760	360028	810	760	360037	810	760
M-6H	6" w/.250 WALL	2.1	360501	780	720	360502	810	760	360503	810	760	360505	810	760	360504	810	760
M-7	7"	2.3	360002	780	720	360011	810	760	360020	810	760	360029	810	760	360038	810	760
M-8	8"	4.5	360003	870	790	360012	920	860	360021	920	860	360030	920	860	360039	920	860
M-10	10"	4.9	360004	920	860	360013	950	890	360022	950	890	360031	950	890	360040	950	890
M-1034	10-3/4"	5.1	360005	1,060	1,000	360014	1,110	1,070	360023	1,110	1,070	360032	1,110	1,070	360041	1,110	1,070
M-12	12" w/.250 WALL	5.0	360466	1,060	1,000	360467	1,110	1,070	360468	1,110	1,070	360469	1,110	1,070	360470	1,110	1,070
M-12	12" w/.375 WALL	5.0	360006	1,060	1,000	360015	1,110	1,070	360024	1,110	1,070	360033	1,110	1,070	360042	1,110	1,070
M-1234	12-3/4"	7.9	360007	2,150	2,020	360016	2,200	2,050	360025	2,200	2,050	360034	2,200	2,050	360043	2,200	2,050
M-14	14"	8.1	360008	2,150	2,020	360017	2,200	2,050	360026	2,200	2,050	360035	2,200	2,050	360044	2,200	2,050

M-Winches can be mixed to achieve the higher quantity pricing.

M-WINCH HANDLES



MODEL	ITEM #	FOR M-WINCH MODEL #	1-5	6+	LBS.
MH-5	360045	M-5	\$59.00	\$54.00	.50
MH-612	360046	M-6 THRU M-14	126.00	118.00	1.1

Winch Handles on this page can be mixed to achieve the higher quantity pricing.

LOCK & KEY FOR M-WINCHES



MODEL	ITEM #	DESCRIPTION	1-5	6+	LBS.
M-L	360054	LOCK w/KEY	\$76.00	\$72.00	.08
M-K	360055	KEY ONLY*	10.66	10.04	.01

*Please provide number located on cylinder lock when ordering replacement keys.

If medium bronze #312, light bronze #311 or a custom color is desired please specify when ordering.